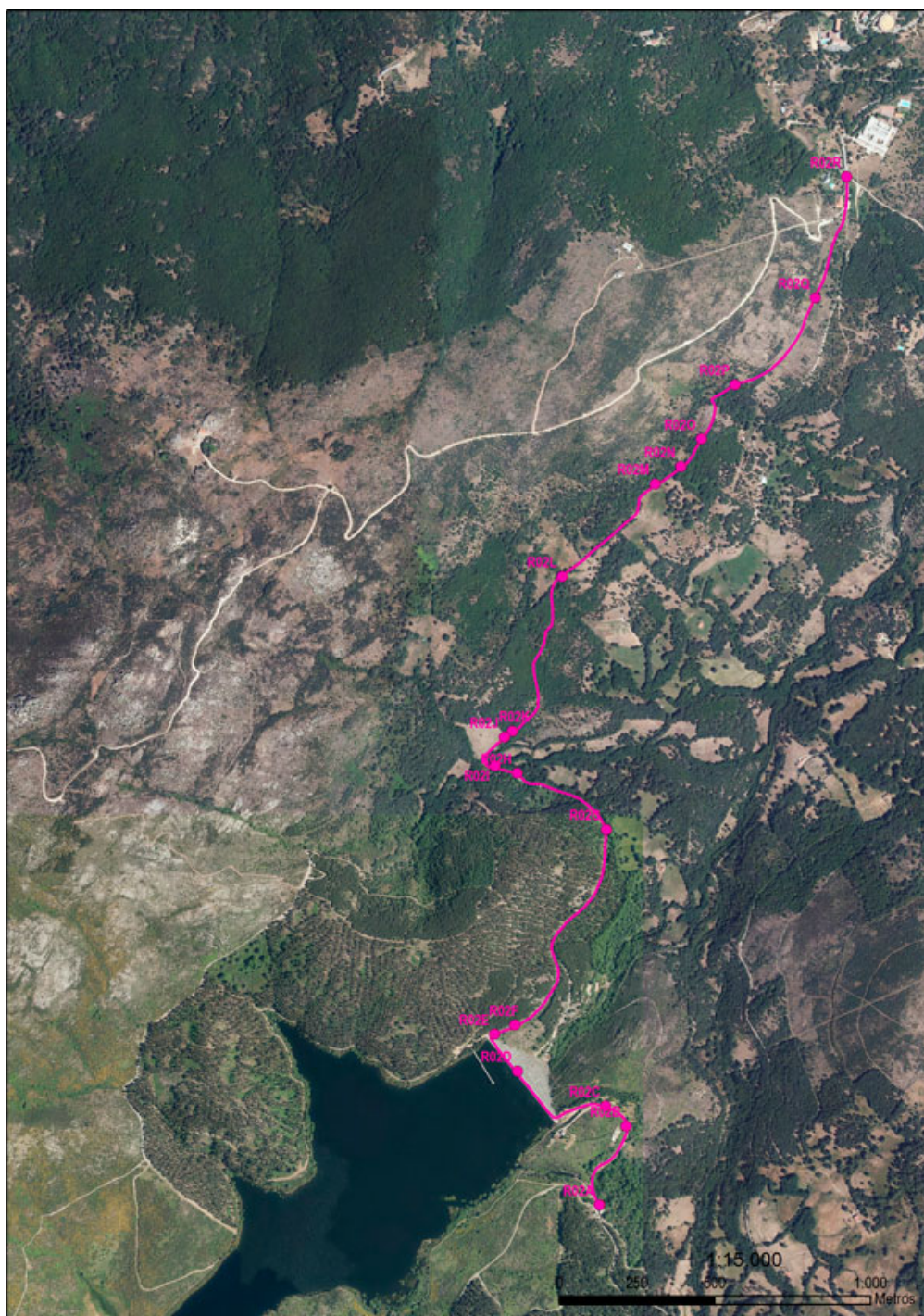




**ROUTE  
R02**

**PANTANO NAVAMUÑO - LLANO ALTO  
STEP BY STEP**



**DIFFICULTY**

MIDE Project: 2/1/1/2

**DISTANCE**

Round Trip Distance:: 9.200  
m.

**DURATION**

Round Trip Duration: 2h  
40min (no stops)

**SING POSTS**

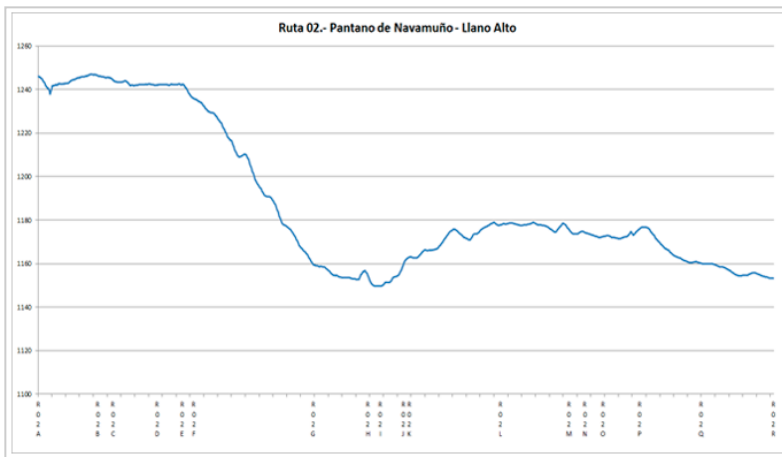
Route Indicative Singal Post:  
**PURPLE**

**LONGITUDINAL  
PROFILE**

Grade 167 m.

**SHADE/SUN**

90% / 10%



		Route 02/ Pantano Navamüño -Llano Alto	
duration	1h 40'		2 severity of the natural environment
climb slope	258 m		2 orientation in the itinerary
descent slope	258 m		2 difficulty in displacement
distance	5,5 km		2 amount of effort required
type of route	round trip		
Conditions all year round, estimated time according to MIDE criterion, without stops Calculated on data for 2017			



**RUTA R02**  
R02A - START  
Start sign 0 metres



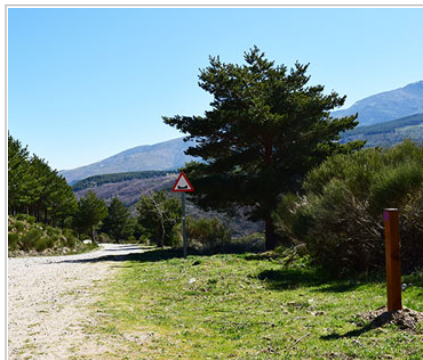
**RUTA R02**  
R02B - PATH  
Ideal for tourists on bikes 290 metres



**RUTA R02**  
R02C - STOP  
Picnic area. Model of the reservoir 390 metres



**RUTA R02**  
R02D - RESERVOIR  
Navamüño reservoir 755 metres



**RUTA R02**  
R02E - v  
Signpost 905 metres



**RUTA R02**  
R02F - PATH  
Ideal for tourists on bikes 975 metres



RUTA  
R02

R02G - VIEWPOINT

Viewpoint that looks out at  
Candelario mountain range 1730  
metres



RUTA  
R02

R02H - SIGN

Signpost 2100 metres



RUTA  
R02

R02I - GATE

Gate 2175 metres



RUTA  
R02

R02J - GATE

Gate 2345 metres



RUTA  
R02

R02K - SIGN

Signpost 2375 metres



RUTA  
R02

R02L - WATER

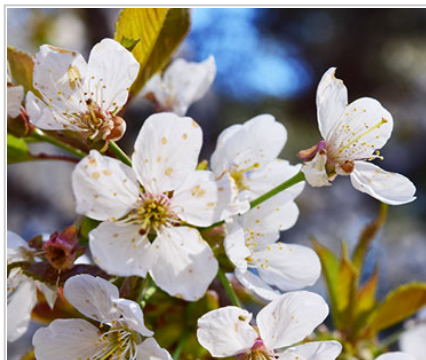
Water 2930 metres



RUTA  
R02

R02M - VIEWPOINT

Viewpoint that looks out at  
Candelario mountain range 3365  
metres



RUTA  
R02

R02N - ALMOND

TREES  
Area of Almond trees 3465  
metres



RUTA  
R02

R02O - WOODS

Birch and Oak woods 3480  
metres



R02P - PHOTO

Viewpoint that looks out at Candelario mountain range 3795 metres



R02Q - SIGN

Signpost 4200 metres



R02R - END

END OF THE ROUTE 4600 metres

## 1. PROHIBITIONS

- **DO NOT** light a fire and **DO NOT** cut firewood
- **DO NOT** leave or bury any kind of trash
- **DO NOT** change or remove elements from the natural environment
- **DO NOT** wash tools and cars in rivers, lakes, and streams
- **DO NOT** throw cigarettes into the natural environment
- **DO NOT** step on the land planted **DO NOT** cross the trails

## 2. OBLIGATIONS

- Follow the route and never leave the trail
- Respect the enclosures along the way. Remember that they own
- Wind and rain guard
- Use trash bins
- Use trash bins
- Camping at established locations
- Closes gates, bars and hut doors that you find
- Respect the sings

## 3. TIPS

- Hiking is not trekking, excursions or climbing
- **Mandatory Individual Equipment** You must wear mountain boots, socks and you must not forget water
- **Sport Equipment**
  - . **Breathable, Waterproof and Termal** Sportswear, Pants and T-shirt
  - . Capes, Raincoats
  - . **Warm Clothing** (Gloves, Scart,..)
  - . Hat or headscarf
  - . Spare Clothes
  - . Suitable footwear and spare socks
- **Other necessary things** (preventative)
  - . Sunglasses
  - . Sun Protection Cream
  - . First aid kit
  - . Walking sticks
- **Provisioning**

- . Water Bottle
- . Enough food
- **Others**
  - . Backpack
  - . Map of the area / Compass / GPS
  - . Latern with backup battery
  - . Mobile with backup battery
  - . Reflective Vest

#### 4. **RECOMMENDATIONS**

- Effort Required
- Drink water frequently and in small quantity
- Eat nuts or chocolate
- In the stops do not get cold
- Take your dog tied, there are cattle and wild animals
- Consult an environmental educator with knowledge of the environment
- Analyze the route according to your capacity
- Check the weather forecast
- Keep in good condition the roads and the walking trails. Avoid accidents, losses, and you must keep the beauty of the hiking routes

---

Rutasporcandelario.es picks up the effort of Candelario City Council to design an offer of Active and Familiar Tourism from the locality and its surroundings. Routes that depart most of Candelario and are designed with round or round trajectories.

Copyright © City Council of Candelario. It is forbidden the total or partial reproduction of the contents of this website without the written consent of the City Council of Candelario.